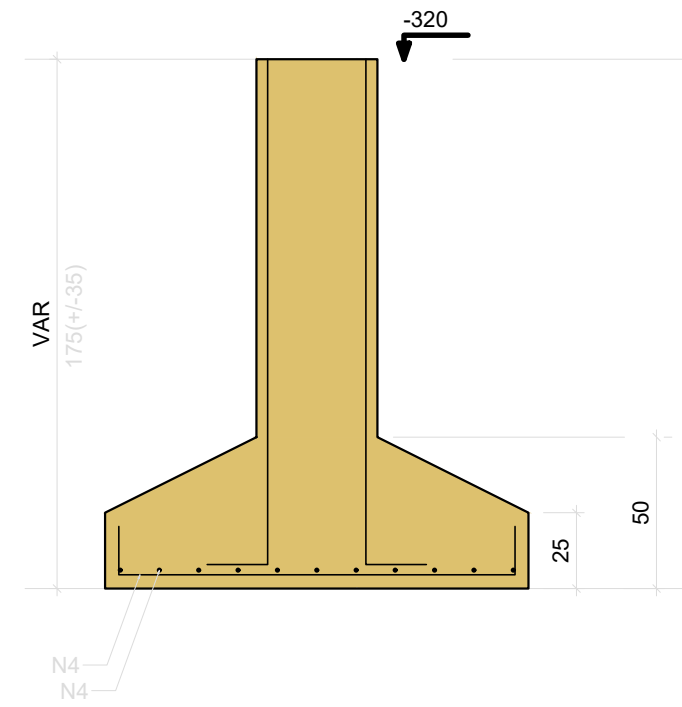
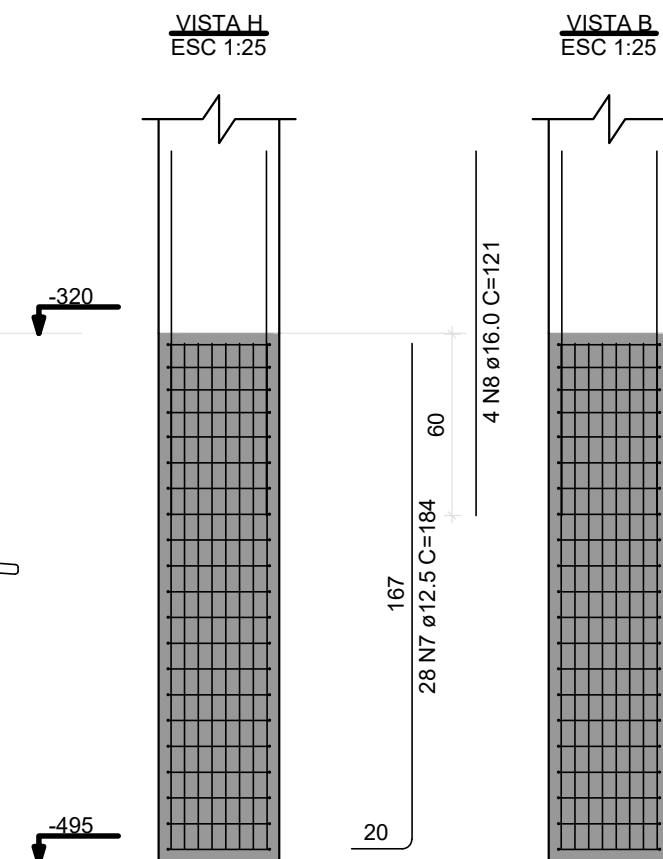
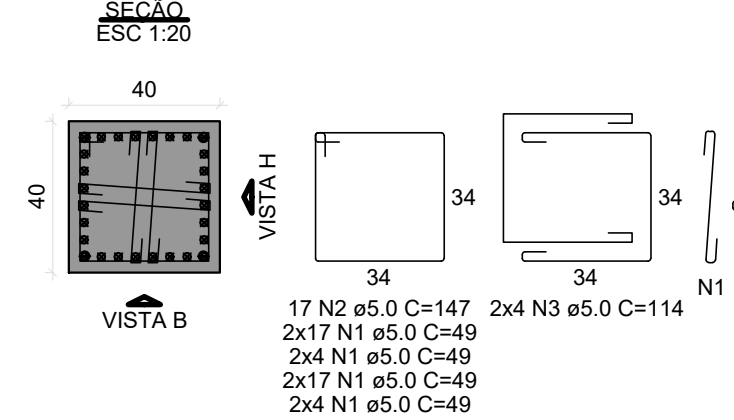


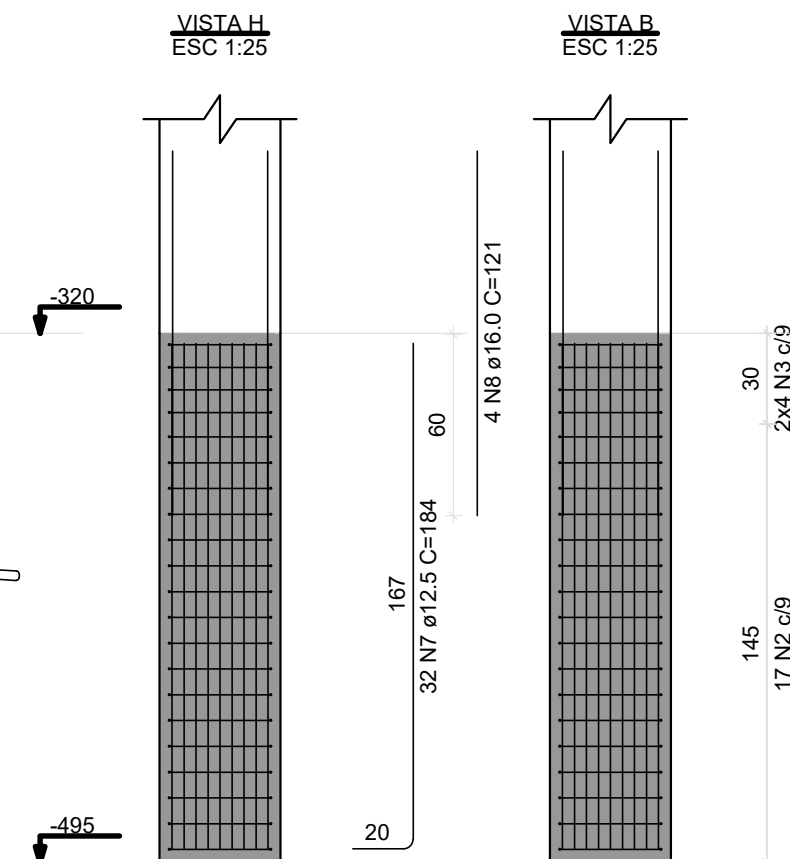
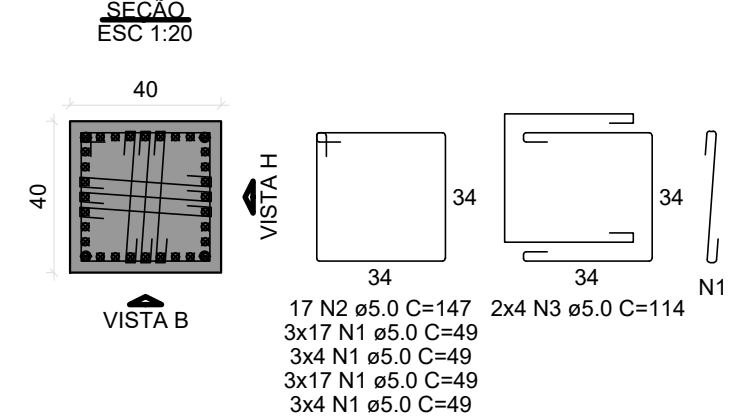
CORTE
ESC 1:25



FUNDAÇÃO - L

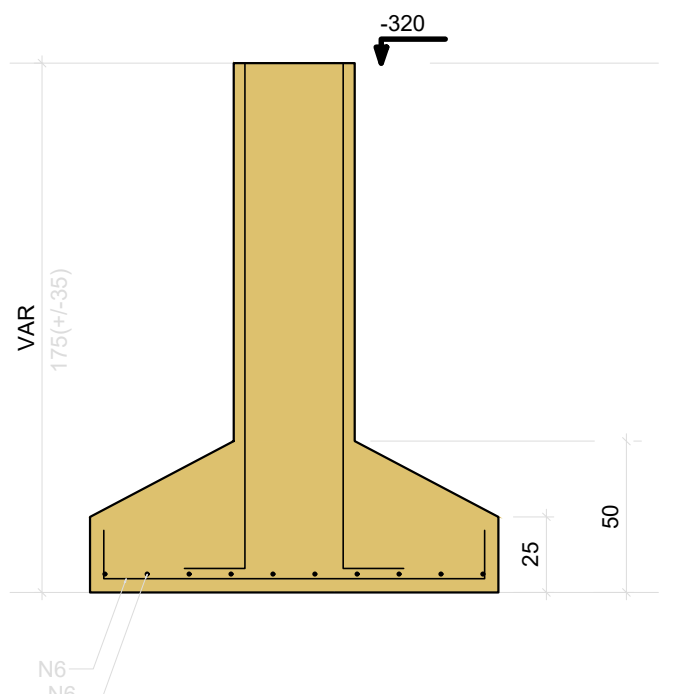


FUNDAÇÃO - L

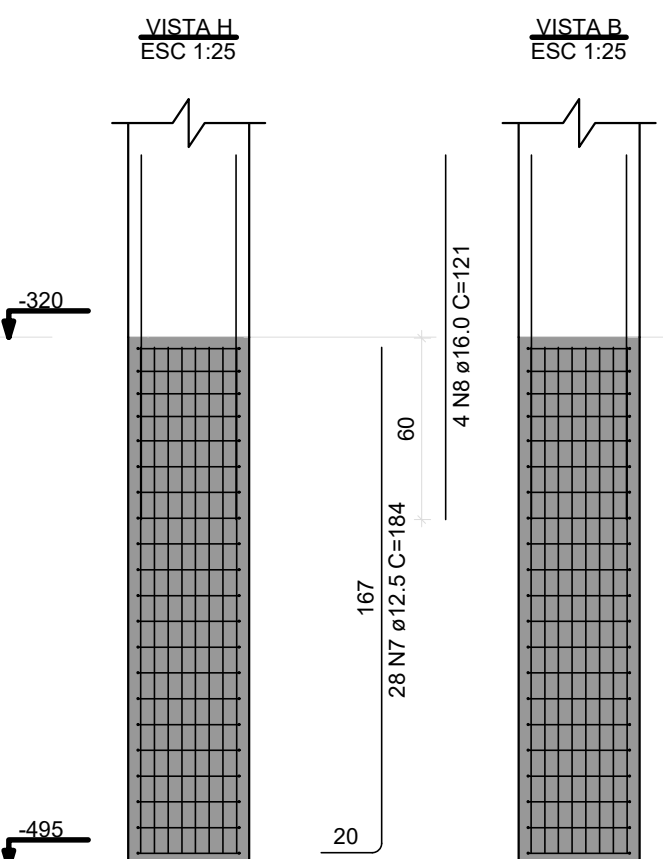
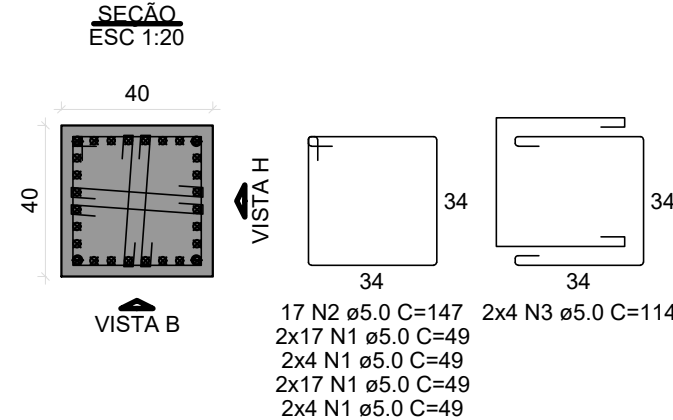


Technical drawing of a square plate with a square hole. The outer square has a side length of 135. The inner square hole has a side length of 40. The distance from the center of the hole to the outer edge is 126. The plate is made of 10 N6 steel, with a thickness of 16. The material specification is 10 N6 ø10.0 c/13 C=153.

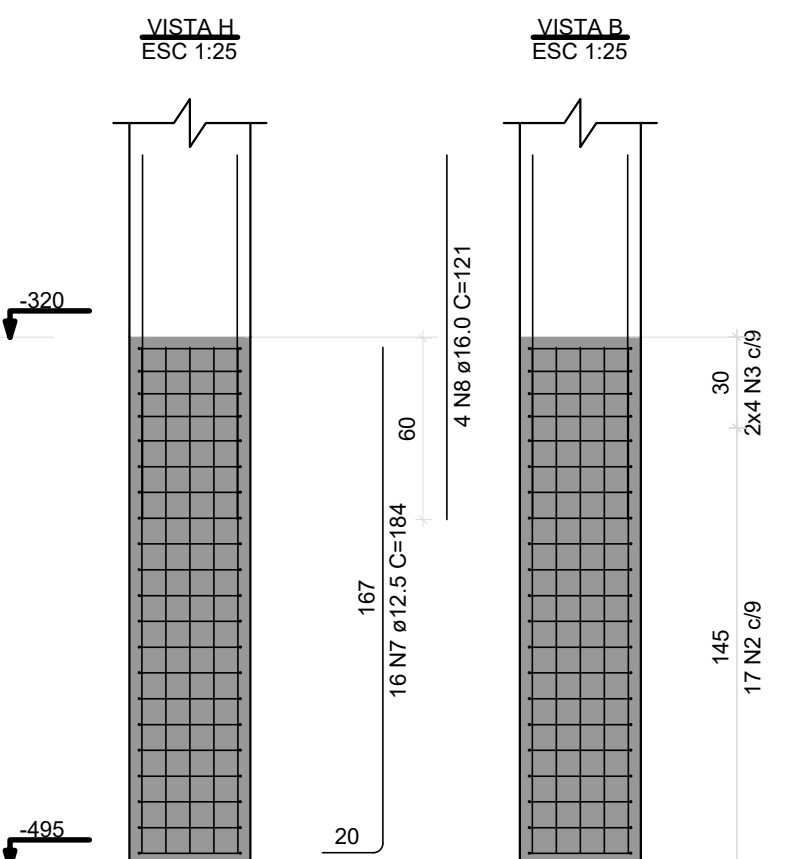
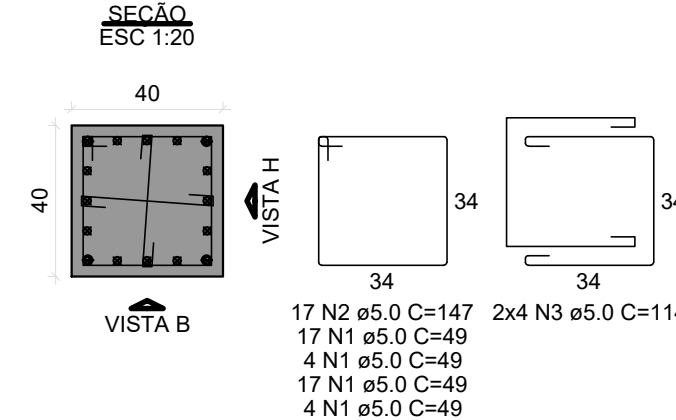
CORTE
ESC 1:25



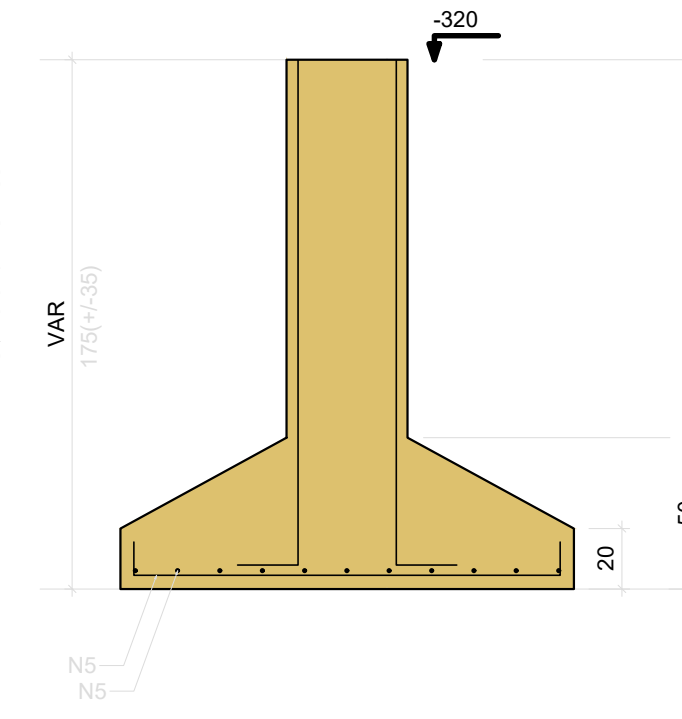
FUNDAÇÃO - L1



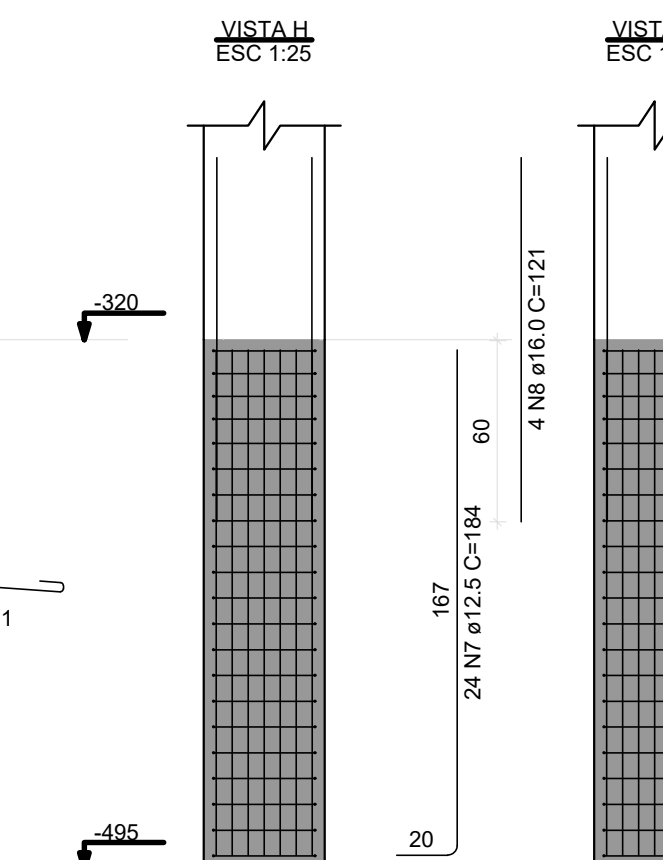
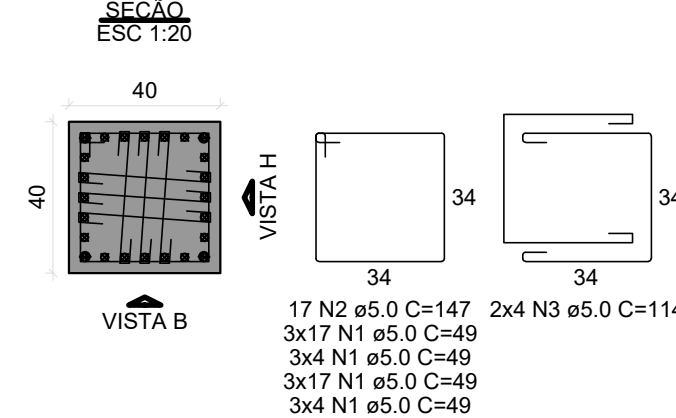
FUNDAÇÃO - L

[illegible]

CORTE
ESC 1:25




FUNDAÇÃO - L



BLOCO ÁREA COMUM PRANCHAS: 212 a 295

REVISÃO	DESCRIÇÃO	REVISADO POR	DATA
REVISÃO 00	EMISSIONAL INICIAL	WAGNER	MARÇO/2024

SECRETARIA DE ESTADO DA SEGURANÇA PÚBLICA		SERGIPE GOVERNO DO ESTADO	DIRETORIA DE ARQUITETURA E EDIFICAÇÕES PRACA TOBIAS BARRETO, nº 20, BAIRRO SÃO JOSÉ CEP: 49050-220 ARACAJU/SE TELS.: (79)3216-5454 / (79)98851-9337
TIPO: PROJETO ESTRUTURAL EXECUTIVO DA CONSTRUÇÃO DO CENTRO INTEGRADO DE SEGURANÇA PÚBLICA (CISP) EM NOSSA SENHORA DA GLÓRIA/SE			Nº DA PRANCH. 223/34
ASSUNTO: BLOCO ÁREA COMUM SAPATAS 10			
END.: RUA ANTÔNIO JOAQUIM DE FARIAS, S/N – N. SRA DA GLÓRIA – SE			
AUTOR DO PROJETO: WAGNER DARY DA SILVA			
RESPONSÁVEL TÉCNICO: WAGNER DARY DA SILVA			RN: 270771497-
ESCALA: INDICADO	DATA: MARÇO/2024	DESENHISTA: WAGNER DARY DA SILVA	